



**AiFOS**  
Supporti Didattici

# AiFOS

Associazione Italiana Formatori ed  
Operatori della Sicurezza sul Lavoro



## Occupational risks

Legislative Decree 81/2008, art. 37  
Agreement Government-Regions 21/12/11 and 07/07/16

# Work Environments



# Work Environments

## Definition

Work environments are:

- places intended to **host** workplaces
- places that are **accessible** to the worker during the course of his/her activity



# Work Environments: Requirements



Buildings housing work environments must comply with safety **requirements**:

- stability, solidity, cleanliness
- height and area
- stairs, floors, walls, ceilings, windows and skylights, doors
- traffic routes, danger areas, emergency routes and exits
- workplaces and passageways

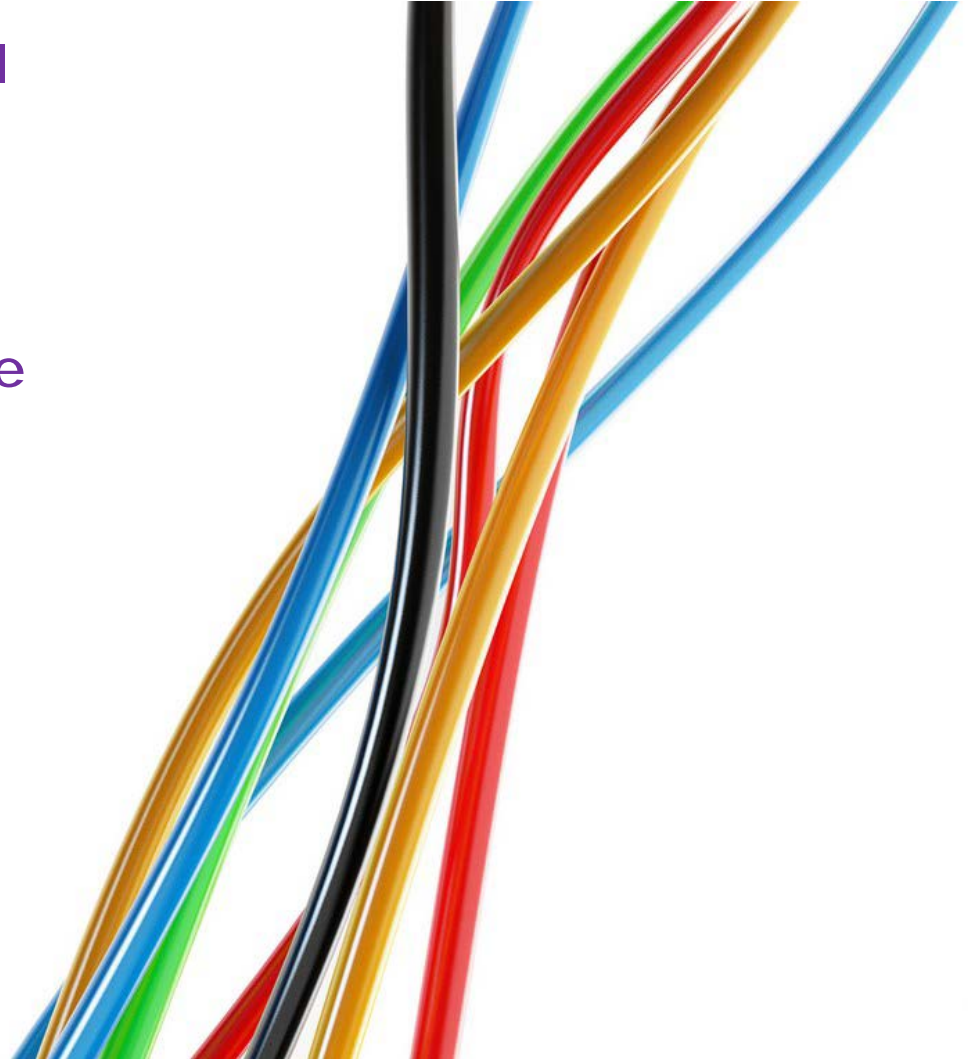
# Electrical Risk



# Electricity

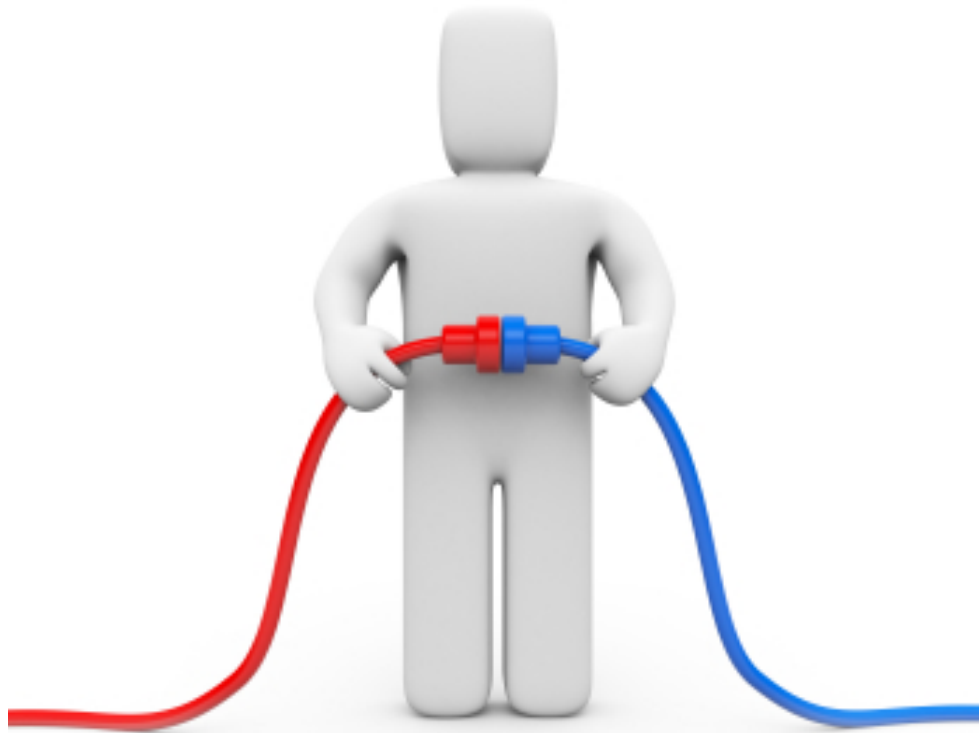
(1)

- Electric current consists of a **flow of electrical charges** (electrons) that takes place inside some materials
- **Conductors**: materials that allow the **passage** of electric current
- **Insulators**: materials that do **not** allow the passage of electric current



# Electricity

(2)



## Conductors

- Metals (copper, silver, aluminum)
- Organic tissues (the human body)

## Insulators

- Glass
- Marble
- Plastic
- Rubber
- Cork
- Wood
- Paper



# Video Display Terminal



# Some Definitions

- By **video display terminal** we mean an "alpha-numeric or graphic screen"
- By **workplace** we mean "the set that includes equipment equipped with a video display terminal or other data entry system, including the telephone, printer, etc., as well as the immediate surrounding work environment"
- "By **worker** we mean "anyone who uses equipment equipped with video terminals, systematically or habitually, for twenty **hours a week**, minus interruptions"



# Interruptions



- The worker has the right to a **15-minute interruption** of the activity, by means of breaks or a change of activity, every one hundred and twenty minutes of continuous application at the display screen
- The **break** is considered to all intents and purposes an integral part of working hours

# Work-related Stress



# Work-related Stress

(1)

- Organized work is related to the traditional term “fatigue”
- The term **stress** is defined as **non-physical fatigue**
- These are the activities where the mechanism of **mental actions** is strongly stimulated by the type of task to be carried out



# Work-related Stress

(2)

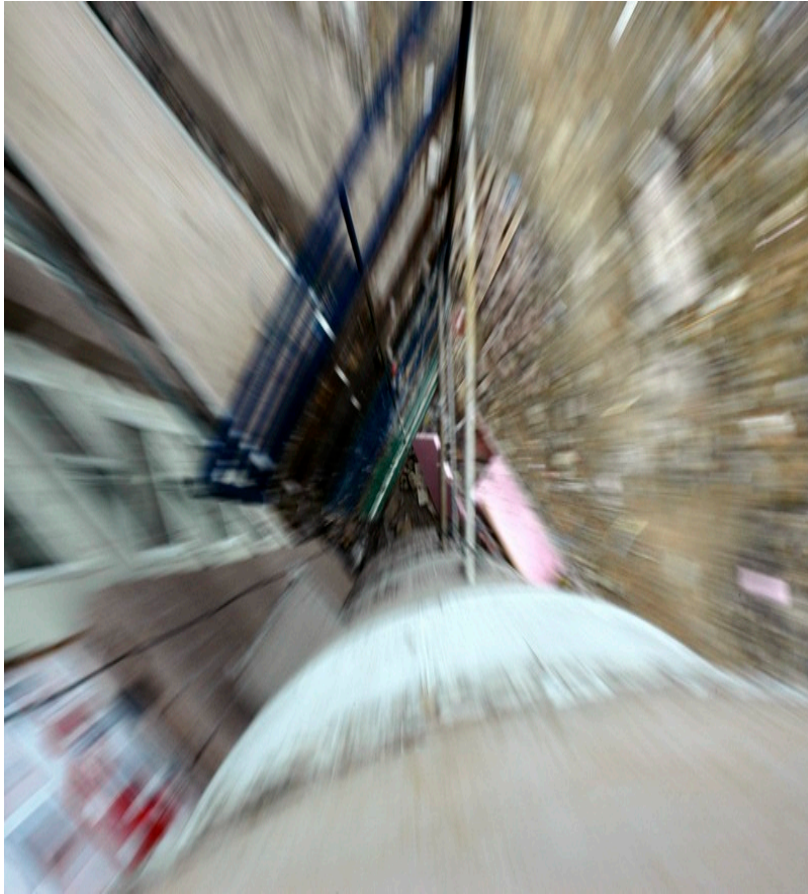


- From the concept of fatigue, we **move on** to:
  - ✓ level of **mental load**
  - ✓ **stress** at **work**
- The characteristic of stress, understood as a general syndrome of adaptation, is that of being a **non-specific subjective reaction** to different stimuli.

# Falling From Heights



# Falling From Heights



- **Falling from heights** is one of the major causes of injury, often fatal, and is due to the failure of observing the rules and of taking the minimum measures of protection!
- Superficiality, useless acrobatics, habits or rather, bad habits affect the **incorrect** behavior of workers!



# Working at Heights

“**Work at heights**” not only refers to building and construction activities, but to all work activities that expose workers to the risk of falling from a height greater than **2 meters** with respect to a ground level!



# Hazardous Substances



# Chemical Agents



## A bit of background information

Legislative Decree no. 81/2008 defines chemical agents: "**elements** or **chemical compounds** in their natural state or obtained, used or disposed of through any work activity, whether they are produced intentionally or not and are placed on the market or not".

# The Chemical Risk

A chemical risk can lead to:

- **safety risks** (fire, explosion, contact with aggressive and/or corrosive substances that can cause burns, degradation and corrosion of the systems)
- **health risks** (exposure to toxic and harmful substances which, if absorbed, lead to intoxication or to the development of occupational diseases)



# Physical Agents: Noise

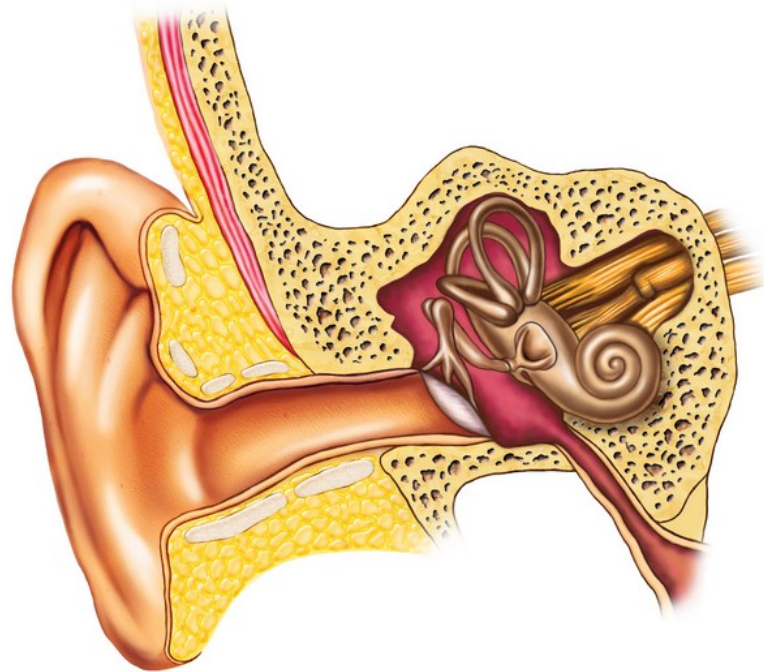


# What Are the Physical Agents?

- A specific section of Legislative Decree n. 81/2008 is devoted to the general provisions regarding physical agents!
- Physical agents are:
  - ✓ noise
  - ✓ mechanical vibrations
  - ✓ electromagnetic fields
  - ✓ optical radiations



# Noise: Effects on Humans



Noise has immediate effects on health:

- **discomfort**, subjective feeling of discomfort which usually does not follow any organic effect
- reversible alteration **disorder** after a period of rest away from the source
- **damage**, irreversible alteration

# AiFOS



*Se ci scambiamo una moneta  
avremo entrambi una moneta  
Se ci scambiamo un'idea  
avremo entrambi due idee*

**Grazie per l'attenzione**